

PHASE 2 – FEASIBILITY ANALYSIS

BARRETT STREET

(PARK AVENUE TO MOUNTAIN AVENUE)

The condition of Barrett Street is typical for the group of streets between Park Avenue and Mountain Avenue. Barrett Street is in need of rehabilitation.

The pavement suffers from extensive alligator cracking as seen in attached photos. The sub surface condition of the roadway is questionable as macadam is exposed at potholes and must be addressed.

The roadway does have granite curbing throughout but is rolled and sunken in most areas (see photos) and must be corrected to control storm water flow. The condition of the asphalt sidewalks are poor.

We suggest the following corrective actions

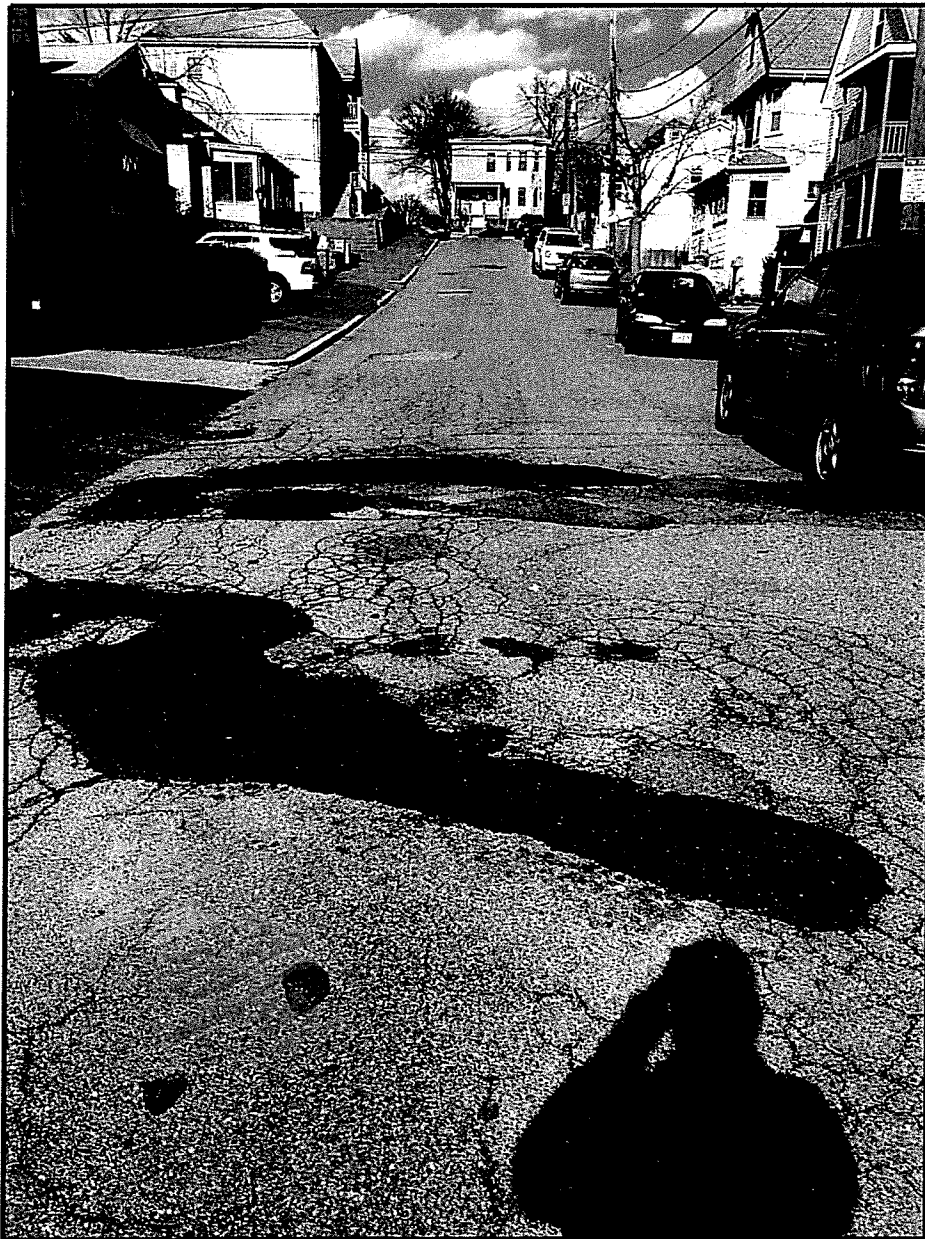
1. Mill roadway, put down a binder course, apply new top coat.
2. Remove and re-set curbing.
3. Remove existing asphalt sidewalks.
4. Install new concrete sidewalks.

An option does exist for tree planting on the even numbered side of the street.

Barrett Street

Typical condition of roadway, similar to other side streets between Park Ave. and Mountain Ave.

Extensive cracking, settlement and pothole repairs.



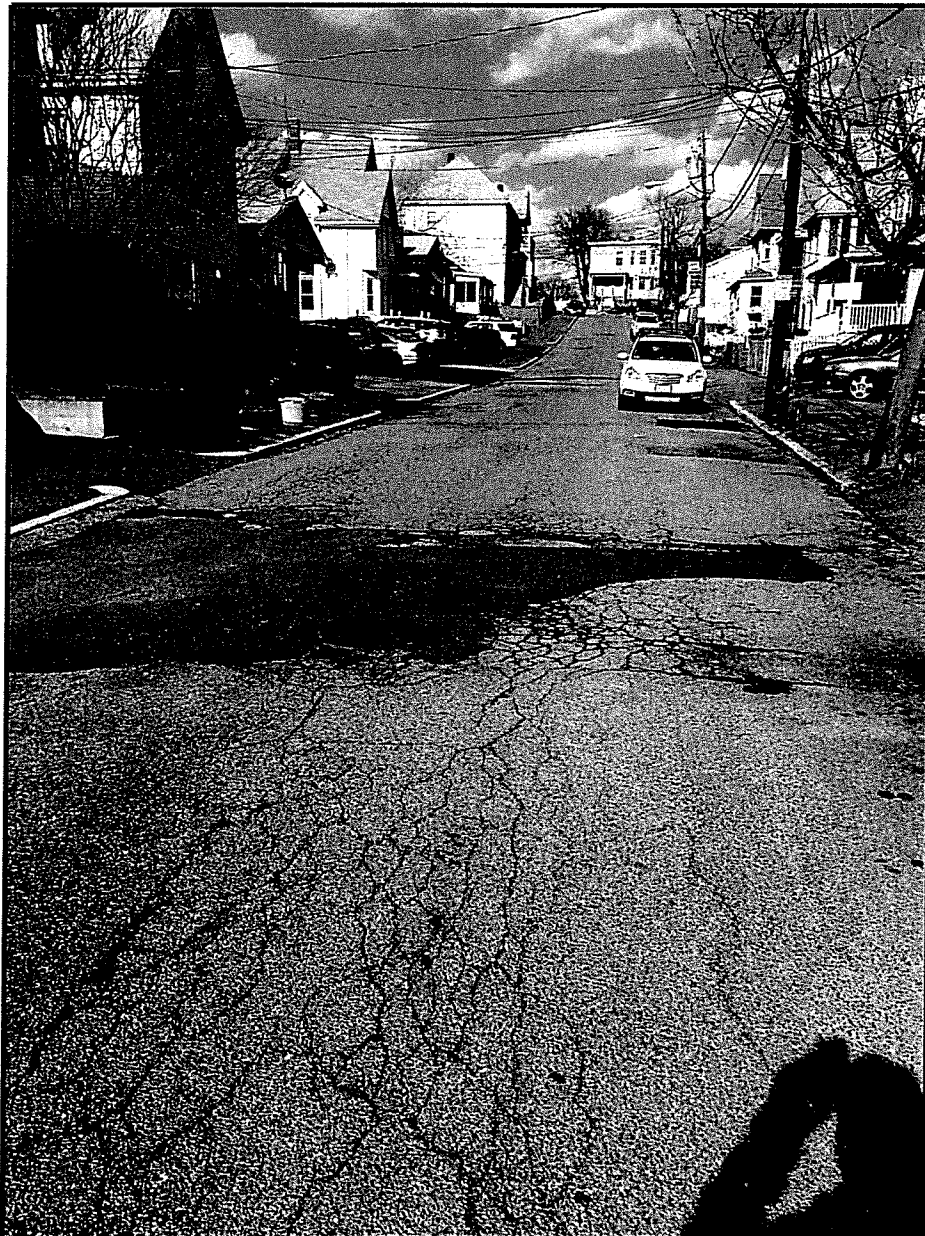
2/2016

Barrett Street

Typical condition of roadway, similar to other side streets between Park Ave. and Mountain Ave.

Extensive cracking, settlement and pothole repairs.

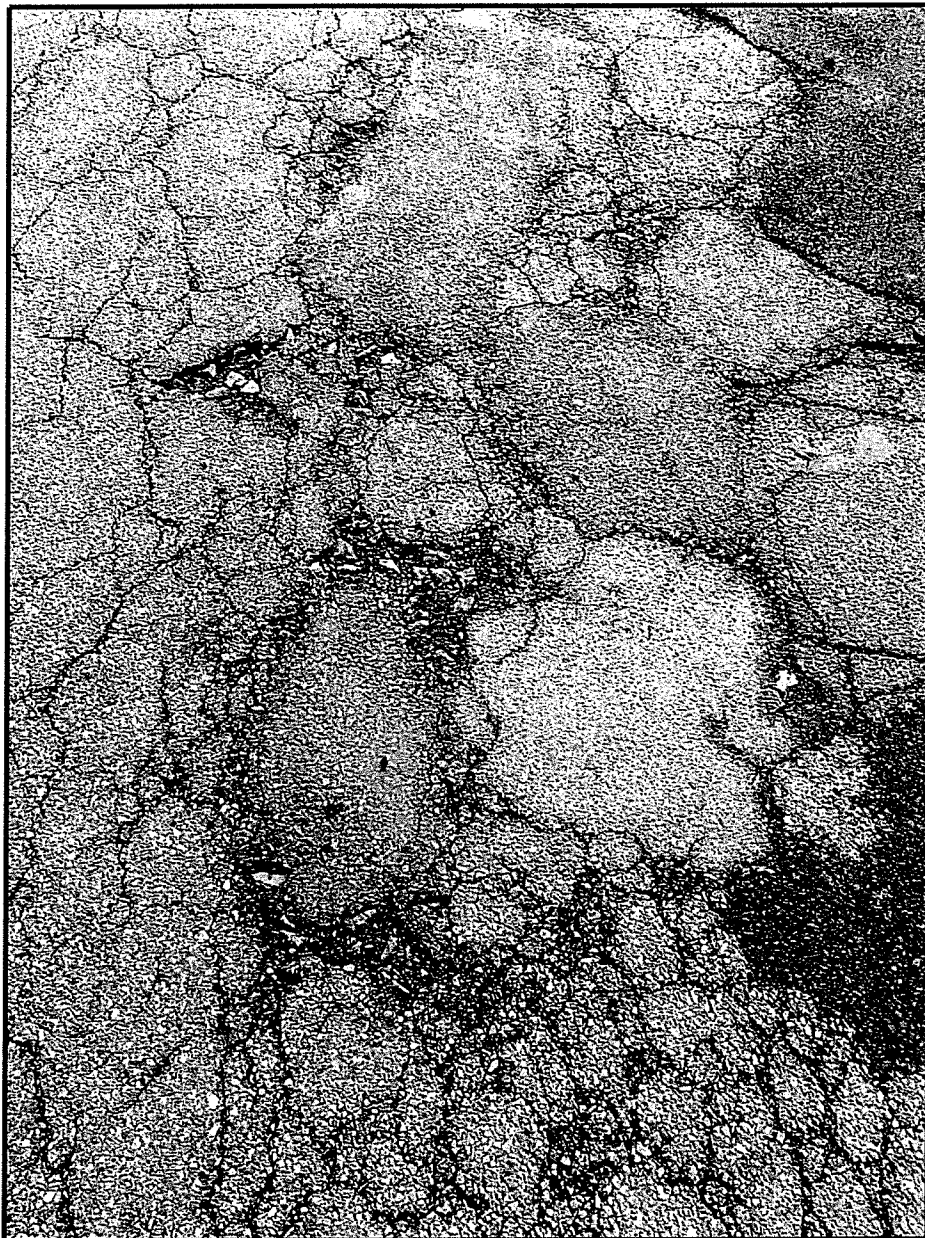
Hydrant installed 12/2015



Barrett Street

Photo highlighting exposed macadam road base at potholes.

If road is milled, binder and top course should be applied. More information necessary to determine if this and similar streets, are suitable for reclamation over milling and paving.



Barrett Street

Tree Walls?

Photo highlighting very poor section of sidewalk and curb which is rolling over. **Curling** should be removed and reset and sidewalks reconstructed in concrete.

Typical condition of roadway continues.

